

Chipman School Progress Report Program Improvement

**Board Meeting
10/13/09**

2004/2005

Academic Performance Index - 674

Academic Program

Literacy

Multiple measures and placement matrix used for all students

- 5 sections of REACH – Intensive
- 6 sections state adopted Prentice Hall with modifications for Strategic level readers
- 10 sections state adopted Prentice Hall for Benchmark and Advanced level readers

- Math
- 6 sections Math Intervention
- Grade level math classes: Course 1 through Geometry

Professional Development

- Coaching with Phil Gonsalves
- Asilomar Math Conference
- Math University Night
- Direct Instruction conference
- Department/Grade Level Academic vocabulary development
- Success Maker
- Literacy Coach
- REACH program coaching
- Consortium on Reading Excellence – CORE
- Bay Area School Reform Collaborative- BASRC
- Alameda Reform Collaborative – ARC
- Equity work – Culturally Responsive Cadres training
- 2 hours of weekly collaboration
- ITI Coaching with Dean Tannewitz

2005 CST Results

2004/2005	ELA	+/-	Math	+/-
AMO	24.4	+10.8	26.5	+10.5
School wide	30.0	+1.3	30.0	+1
African American	19.8	+1.1	15.0	+1.3
Asian	44.9	+5.9	65.3	+7.2
Filipino	31.8	-1.1	29.9	+1
Hispanic	24.4	+3.7	16.1	-2.1
White	40.2	+1.1	36.5	-1.7
SED	26.3	+5.1	28	+4.3
EL	21.9	+4.2	33.7	+2.1
SWD	0	-3.8	0	-1.9

2005/2006

Academic Performance Index - 674

SAIT – based on 2003/04 API scores which were down 2 points

Program Improvement Watch List

Academic Program

Literacy

Multiple measures and placement matrix used for all students

- 4 sections of REACH – Intensive
- 7 sections state adopted Prentice Hall with modifications for Strategic level readers
- 10 sections state adopted Prentice Hall for Benchmark and Advanced level readers
- AUSD assigned ELL Newcomer program to Chipman

Math

- 6 sections Math Intervention
- Grade level math classes: Course 1 through Geometry

Professional Development

- Coaching with Phil Gonsalves – SIMI Grant
- Asilomar Math Conference
- Math University
- AB466 Language Arts Adoption Training
- SAIT Analysis – Action learning Systems
- Prentice Hall and High Point coaching
- Kate Kinsella Academic vocabulary instruction
- Success Maker
- Literacy Coach
- REACH program coaching
- Ed Porter – Equity, Excellence and Rigor
- Consortium on Reading Excellence – CORE
- Bay Area School Reform Collaborative- BASRC
- Alameda Reform Collaborative – ARC
- Equity work – Culturally Responsive Cadres training
- 2 hours of weekly collaboration
- ITI Coaching with Dean Tannewitz

2006 CST Results

2005/2006	ELA	+/-	Math	+/-
AMO	24.4	0	26.6	0
School wide	35.0	+5	34.0	+4
African American	14.7	-5.1	13.5	-1.5
Asian	55.6	+10.7	65.0	-.3
Filipino	42.9	+11.1	35.8	+6
Hispanic	16.5	-7.9	18.7	+2.6
White	59.0	+18.8	43.6	+7.1
SED	31.5	+5.2	32.5	+4.5
EL	31.5	+9.7	37.4	+3.7
SWD	1.6	+1.6	1.7	+1.7

2006/2007

Academic Performance Index - 674

SAIT – need one point API growth to exit SAIT
Program Improvement – Year 1

Academic Program

Literacy

Multiple measures and placement matrix used for all students (GRADE added)

- 3 sections of REACH – Intensive
- 8 sections state adopted Prentice Hall with modifications for Strategic level readers
- 12 sections state adopted Prentice Hall for Benchmark and Advanced level readers
- AUSD assigned ELL Newcomer program to Chipman

Math

- 7 sections Math Intervention
- Grade level math classes: Course 1 through Geometry

Professional Development

- SIMI and EETT coaching - Math
- Math University
- AB466 Language Arts Adoption Training
- SAIT Analysis – Action Learning Systems
- Prentice Hall and High Point coaching
- Kate Kinsella Writing Training
- SIM Coaching
- Success Maker
- Literacy Coach
- REACH program coaching
- Consortium on Reading Excellence – CORE
- 1 hour 18 minutes of weekly collaboration

2007 CST Results

2006/2007	ELA	+/-	Math	+/-
AMO	24.4	0	26.5	0
School wide	35.6	+0.6	34.7	+0.7
African American	15.5	+0.8	8.8	-4.7
Asian	56.3	+0.7	65.1	+0.1
Filipino	46.9	+4	40.7	+4.9
Hispanic	27.5	+11	25.3	+6.6
White	55.8	-3.2	41.0	-2.6
SED	32.3	+0.8	33.4	+0.9
EL	30.4	+1.2	40.2	+3
SWD	6.3	+4.7	11.4	+9.8

2007/2008

Academic Performance Index – 703

Exited SAIT

Program Improvement – Year 2

Academic Program

Literacy

Multiple measures and placement matrix used for all students

- 2 sections of Corrective Reading – Intensive
- 7 sections FUSION (UK-CRL) for Strategic level readers
- 13 sections state adopted Prentice Hall for Benchmark and Advanced level readers
- AUSD ELL Newcomer program continues

Math

- 8 sections Math Intervention
- 2 sections Transitions
- Grade level math classes: Course 1 through Geometry

Professional Development

- SIMI coaching
- AUSD math coach
- SIM coaching and PD
- Success Maker
- Equity walkthroughs
- 1 hour 18 minutes of weekly collaboration

2008 CST Results

2007/2008	ELA	+/-	Math	+/-
AMO	35.2	+10.8	37.0	+10.5
School wide	42.3	+4.7	33.9	-.8
African American	18.8	+3.3	7.0	-1.8
Asian	60.4	+4.1	64.0	-1.1
Filipino	47.8	+.9	34.4	-6.3
Hispanic	25.8	-1.7	15.6	-9.7
White	62.7	+6.9	44.0	+3
SED	35.9	+3.6	30.9	-2.5
EL	33.3	+2.9	35.2	-5
SWD	8.5	+2.2	6.7	-4.8

Academic Performance Index – 724 Program Improvement – Year 3

Academic Program

Literacy

Multiple measures and placement matrix used for all students (GRADE added)

- 2 sections of Corrective Reading – Intensive
- 7 sections FUSION (UK-CRL) for Strategic level readers
- 13 sections state adopted Prentice Hall for Benchmark and Advanced level readers
- AUSD ELL Newcomer program continues

Math

- 8 sections Math Intervention
- Grade level math classes: Course 1 through Geometry

Professional Development

- SIMI
- Success Maker
- In house math/ELA coaching limited
- Courageous Conversations PD
- Ed Porter hired to support equity conversations with staff
- Individuals attend Sharroky Hollie & Beyond Diversity training
- African American Educators Conference-Math focus
- SIM coaching
- 1 hour 18 minutes of weekly collaboration

2008/09 Restructuring Plan

- Charter module sessions attended by staff members and community members
- Outside experts and district personnel provided Chipman staff information on magnet versus charter
- District provided representatives to school site council
- Staff voted and selected charter school option to meet restructuring requirements under program improvement and made recommendations to school site council
- Weekly meetings were set up to receive community input
- Feeder schools visited to provide information on Chipman restructuring
- Staff release time to work on education elements
- Department representatives worked on education elements in June and July

Community Info Calendar

- May 11 – School Site Council Chipman 5:00 PM
- May 12 – Parent Info Meeting Ruby Bridges 6:00 PM
- May 14 – Parent Info Meeting Washington 6:00 PM
- May 18 – Parent Info Meeting Chipman 6:30 PM
- May 21 – Community Outreach #2 Chipman 6:00 PM
- May 27 – Restructuring Update Chipman 6:00 PM
- June 3 – Restructuring Update Chipman 6:00 PM
- June 8 – School Site Council Chipman 5:00 PM
- June 10 – Restructuring Update Chipman 6:00 PM
- June 17 – Restructuring Update Chipman 6:00 PM

2009 CST Results

2008/2009	ELA	+/-	Math	+/-
AMO	46.0	+10.8	47.5	+10.5
School wide	42.7	+.4	47.4	+13.5
African American	24.8	+6	20.5	+13.5
Asian	48.2	-12.2	70.0	+6
Filipino	37.6	+10.2	46.2	+11.8
Hispanic	37.3	+11.5	25.3	+9.7
White	69.2	+6.5	72.0	+28.5
SED	32.2	-3.7	39.3	+8.4
EL	27.5	-5.8	43.2	+8
SWD	15.4	+6.9	11.4	+4.8

Academic Performance Index – 740 Program Improvement – Year 4

Academic Program

Literacy

Multiple measures and placement matrix used for all students (GRADE added)

- 2 sections of Corrective Reading – Intensive
- 7 sections FUSION (UK-CRL) for Strategic level readers
- 13 sections state adopted Prentice Hall for Benchmark and Advanced level readers
- AUSD ELL Newcomer program continues

Math

- 8 sections Math Intervention
- Grade level math classes: Course 1 through Geometry

Target Students

- Identify Basic and Below students and evaluate their instructional program

RISE After School Program

- Math afterschool tutoring integrated with RISE program

Professional Development

- Success Maker
- AUSD Math coach
- Math ongoing department collaboration
- SIM coaching
- Work with BAYCES
- Culturally Responsive Pedagogy – High Engagement – Student Participation
- Use of Active Engagement Technology
- Support new teachers
- 5 ELA, 1 math, 1 PE, 1 SDC

Restructuring

- Work on restructuring plan for program Improvement

Community Outreach

- Community Meeting
September 23,2009 update
- Newsletters
- Website

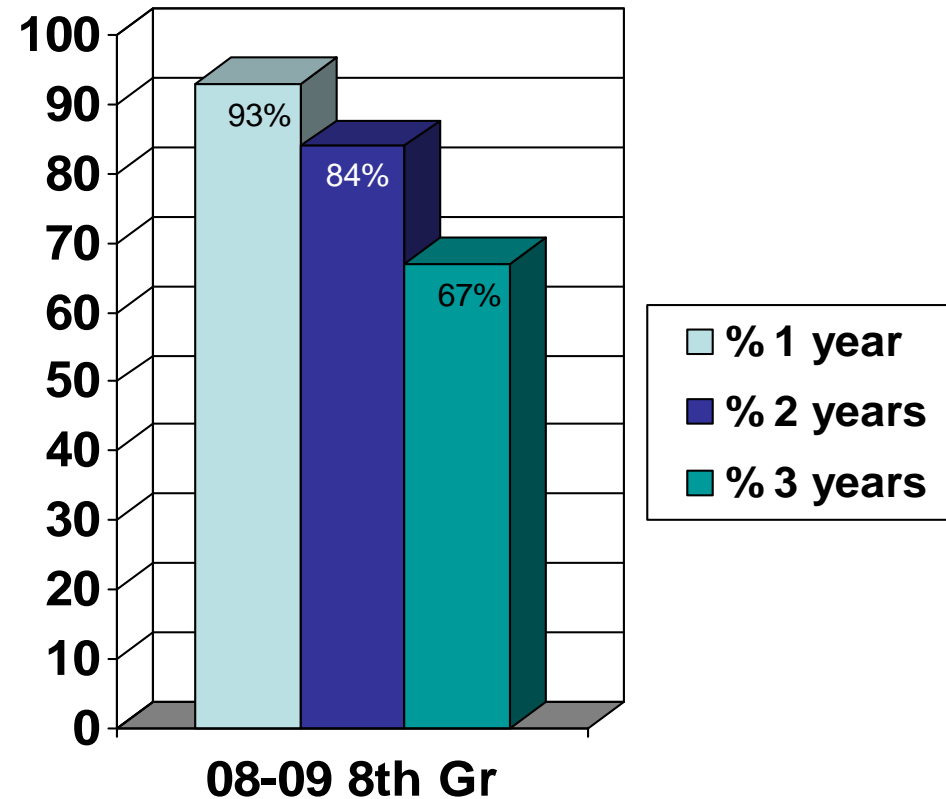
Demographics

	2004	2005	2006	2007	2008	2009
Total students tested	700	573	614	598	603	630
African American	200 - 29%	169 - 30%	179 - 29%	154 - 26%	137 - 23%	138 - 22%
Asian	112 - 16%	100 - 17%	127 - 21%	150 - 25%	161 - 27%	170 - 27%
Filipino	98 - 14%	90 - 16%	92 - 15%	89 - 15%	99 - 16%	96 - 15%
Hispanic	87 - 14%	93 - 16%	98 - 16%	88 - 15%	94 - 15.5%	85 - 13%
White	118 - 17%	87 - 15%	85 - 14%	82 - 14%	78 - 13%	104 - 16.5%
SED	450 - 65%	371 - 65%	386 - 63%	372 - 62%	369 - 61%	369 - 59%
EL	175 - 25%	178 - 31%	198 - 32%	185 - 31%	198 - 33%	198 - 31%
SWD		52 - 9%	66 - 11%	65 - 11%	61 - 10%	60 - 9.5%

Transiency

CMS Transiency – Years @ CMS 2008-2009 8th Grade

Years @ CMS	# 8 th graders in 08-09
Enrolled in 8 th grade @ CMS as of June 2009	211
1 full year @ CMS 8 th grade year	≈ 197
2 years @ CMS 7 th and 8 th grade year	≈ 178
3 years @ CMS 6 th , 7 th & 8 th grade year	≈ 142



District Program Improvement Support

School Reform Coach Responsibilities

- School restructuring: Charter research, program development and coordination with district departments on petition application
- Work with site or district administrators and teachers leaders to assess school needs, develop coaching goals, and develop a coaching plan to align school culture, processes, and structures to support student achievement and close the achievement gap
- Meet regularly with site or district administrators on implementation issues, concerns, progress
- Work collaboratively with Educational Services administrators, principals and site leadership teams to design and implement reform plans that support Chipman student and Staff needs

District Program Improvement Support

Support Focus of School Reform

Change and Culture	Summer-Teacher Planning Sessions School Site Visitations, Charter Meetings
Site Leadership	Continuous District Support to Principal and Reform Coach
Working with Staff	Support Meetings, realigning Title I funds to increase site support
Accountability	Assessment Department, 1 day per week Data Talk and Measures training
Essential Program Components	Compliance and Curriculum support to Site Principal
Language Arts Instruction	Summer Professional Development Continuous SIM Support
Math Instruction	Summer Professional Development Coaching Support Sessions 09-10
EL and Special Ed. Instruction	Continuous Support from District Office departments
Walkthroughs	Ongoing "Math Specific" Planned for November 2009

District Program Improvement Support

School Reform: A Platform for Success!

Site-based needs:

1. Stable School Leadership: Capable of seeing site initiatives completed
2. Stable and Highly Qualified Teachers: Teaching staff that is capable of forming cohesiveness around Mission, Vision and Values
3. Teaching Practice that Aligns with 21st Century Learners: Motivating, Retaining and supporting 21st century Learners
4. Plan for addressing a diverse and mobile population: Regular “Structured” Collaboration which supports planning to meet the needs of all students

District Program Improvement Support

Category	Description	Budget
1000	School Reform Coach	\$69,582
	Teacher Stipends	\$10,000
3000	Health/Welfare	\$15,689
4000	Supplies	\$1600
5000	Travel	\$2,000
	Professional Consultants	\$9,000
Total		\$107,871
5000	SES Contracts	\$50,000
Mandated	School Choice	\$2,000
Total	District PI Support	\$159,871