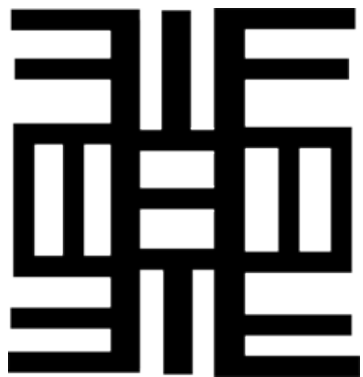
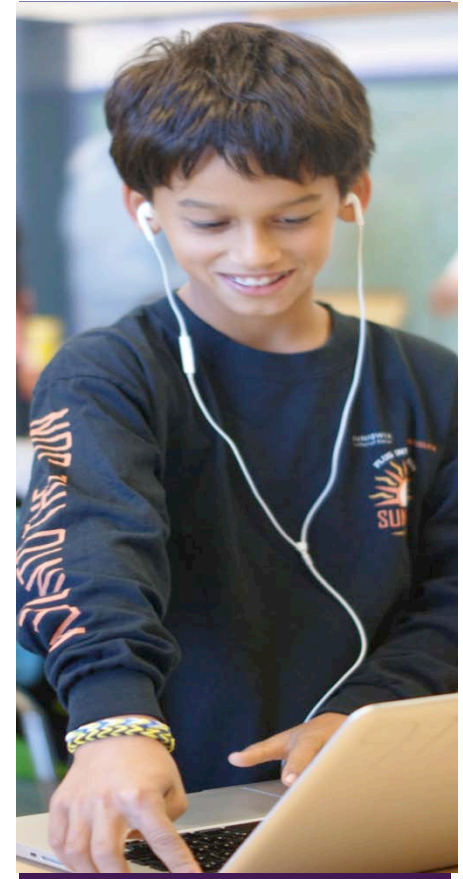
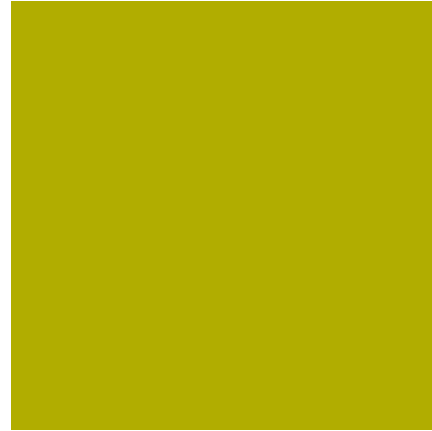




Charter Renewal
Petition Presentation
November 5, 2013



Nea Community
Learning Center

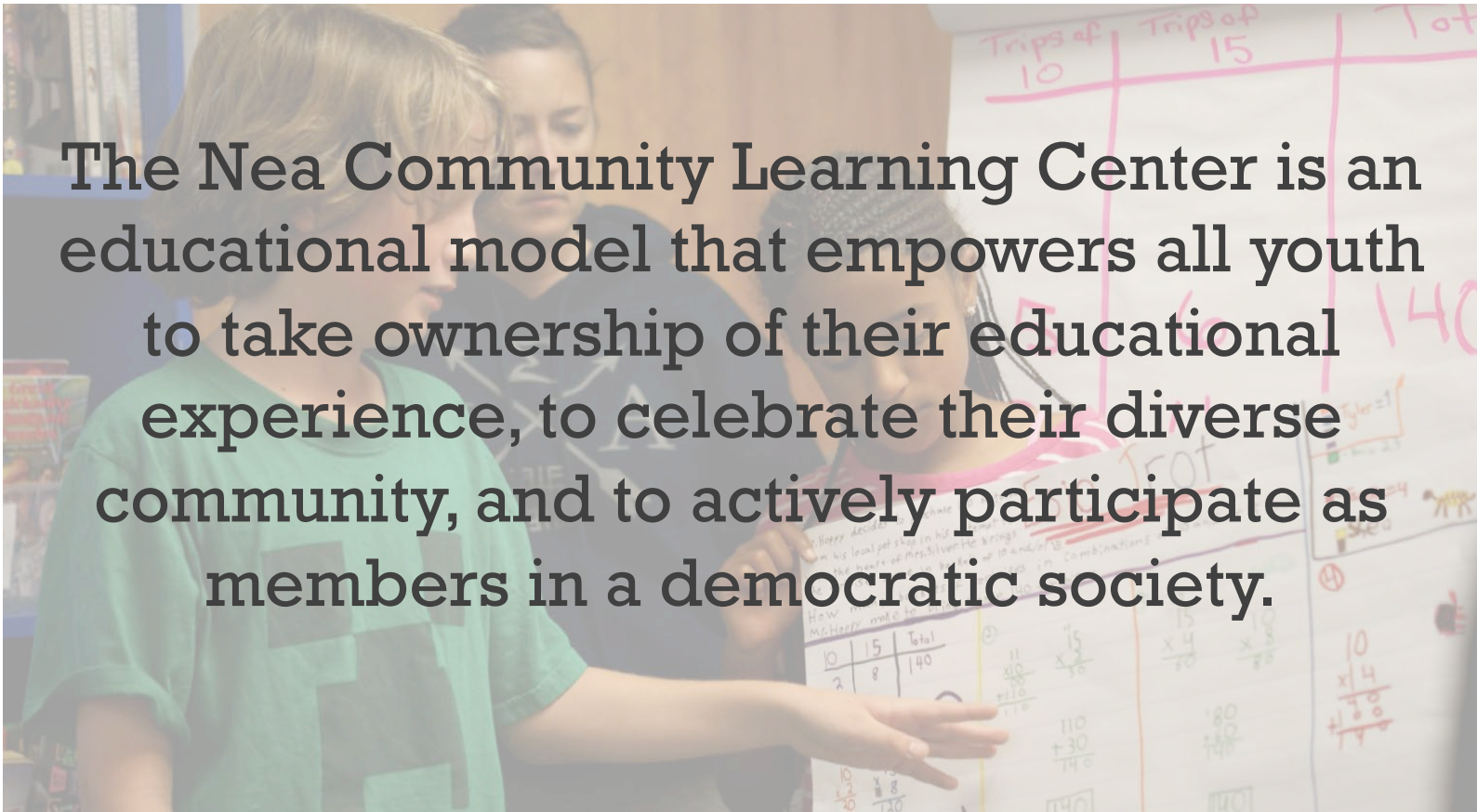


History of Nea



- Nea founded in 2009 to address the persistent wait list at ACLC and high interest in project-based learning opportunities
- Visionary Paul Bentz, with Maafi Gueye and a development team, made real the intention of the founders of ACLC to also have a comprehensive K-12 program
- Began with grades K through 9 in 2009 serving 265 learners
- Graduated first class in 2013 and now has 513 learners in grades K through 12

+ Mission Statement



The Nea Community Learning Center is an educational model that empowers all youth to take ownership of their educational experience, to celebrate their diverse community, and to actively participate as members in a democratic society.

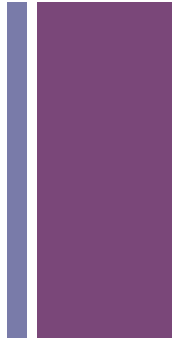
+ Demographics



	2009-10	2010-11	2011-12	2012-13
% White	40	35	37	35
%Mixed/NR	9	13	16	18
%Hispanic	18	17	16	16
%Asian/Pacific	19	19	18	16
%Black	14	15	13	14
%Other	0	1	0	1
Special Ed				
% w/ Disabilities	9	9	8	11
Other				
% FRL	18	17	9	13
%ELL	19	21	17	15
%Homeless	0	0	1	1

+ API History

Year	API	State Rank	Similar Schools Rank
2010	839	7	8
2011	821	6	5
2012	837	7	8
2013	838	NA	NA

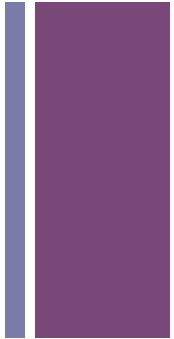


+ Programs

- Nine Nea Principles as ESLOs; Learning to Learn Rubrics
- Highest Graduation Requirements in Alameda
- Project-Based Learning, 21st Century Skills, S.T.E.A.M., *FIRST* Robotics, Social Justice and Sustainability, Alameda County Engineering and Science Fair, Pioneers in Engineering a UC Berkeley, Maker Faire, Engineers Alliance for the Arts
- Approved Provider of UC Scout AP Classes; UC Approved Honors Classes offered; WASC accredited



Annual Yearly Progress Data



AYP - All Subgroups

	ELA				Math			
	2010	2011	2012	2013	2010	2011	2012	2013
Target	56.8%	67.6%	78.4%	89.5%	58.0%	68.5%	79.0%	89.5%
African American	38%	39%	46%	50%	29%	47%	57%	30%
Hispanic	62%	54%	57%	51%	50%	50%	53%	46%
Asian	59%	70%	67%	73%	57%	68%	66%	63%
White	73%	76%	78%	83%	64%	70%	70%	78%
Disability	25%	48%	42%	54%	32%	38%	38%	36%
Socioeconomically Disadvantaged	51%	47%	52%	60%	42%	45%	40%	46%
English Learner	52%	64%	67%	61%	57%	66%	63%	57%

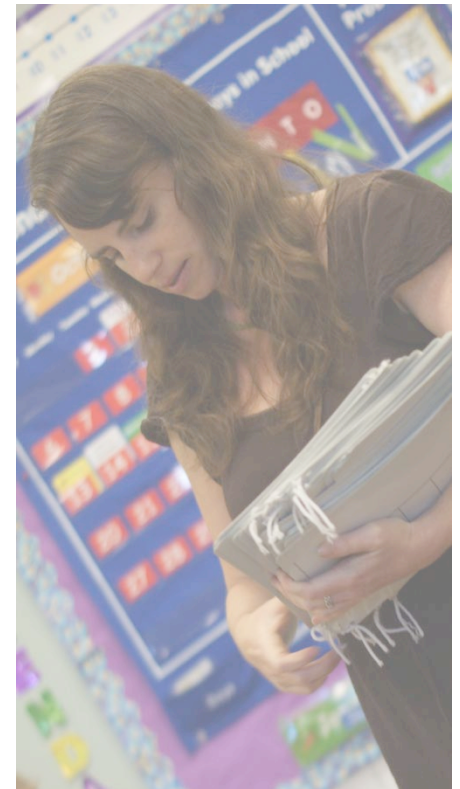
+ Support and Advancement

- **Afterschool Academic Time and Task Management Support**
- **Early Identification, Child Find and Diagnostics**
- **Dedicated ELL Staff**
- **Online Learning Opportunities**



+ Strong Leadership

- **Nea Governing Board Composition**
- **Leadership Collaboration and Professional Development**
- **El Dorado SELPA membership**
- **Professional Organization membership (CCSA, CSDC)**



+ Focus on Continuous Improvement

- CCSS-aligned and SBA-like Benchmark Assessments
- Early-Release Wednesdays for Professional Development and Collaboration
- Illuminate™ Data and Assessment (DnA) Platform
- Facilitator Team-as-Partners in School-wide goal setting

+ Responsible Governance



- **Voting Nea Governing Board Members Include: Lead Facilitator, Two Parents, Two Community Members, Two Learners, Two Facilitators**
- **Community Learning Center Schools (CLCS), Inc. as employer and oversight board**
- **Recent Nea Board Policies include: Promotion and Retention, Uniform Grading, Media, SART and SARB, AB 1575, and Increased Graduation Standards**





Sound Fiscal Accountability



- EdTec provides business services
- Annual independent audit reports return ‘no findings’ for all four years
- Nea Executive Director, Lead Facilitator and the Nea Financial Committee oversee daily spending
- CLCS, Inc. (CMO) approves and provides oversight for all fiscal practices



+ Questions?

